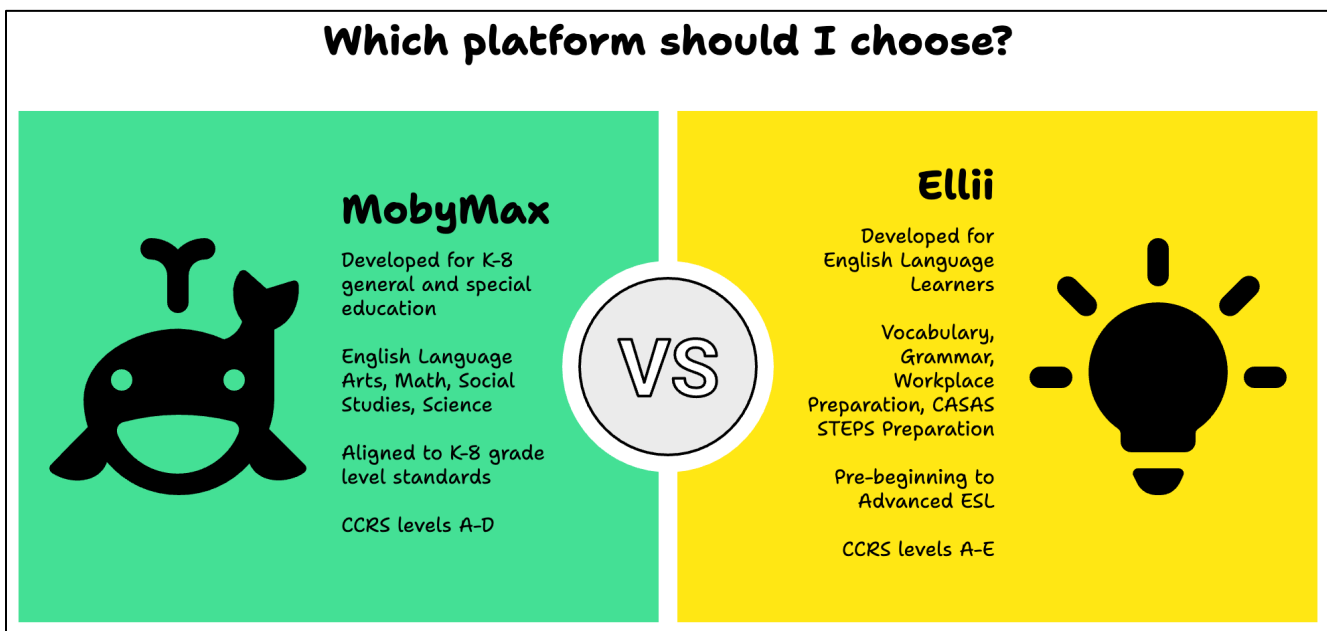


# Quick Overview: MobyMax and Ellii

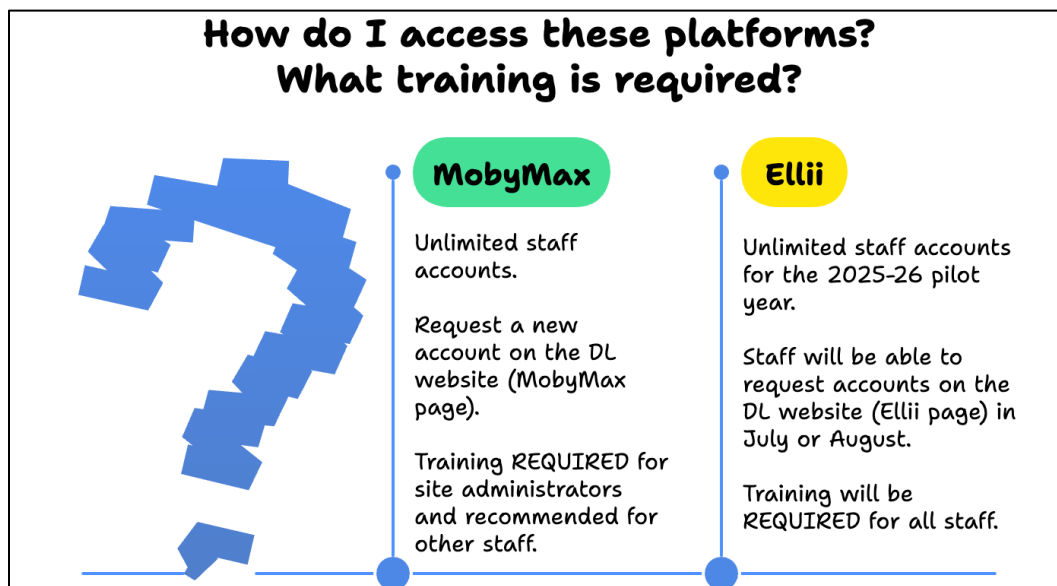
June 3, 2025

- ☐ BOTH platforms are approved for distance learning proxy hours.
- ☐ BOTH platforms will be state-supported (available at no additional cost) for all Minnesota Adult Education staff and learners in 2025-26.
- ☐ MobyMax access is already available. Staff can [request accounts here](#).
- ☐ Ellii will become available in July or August 2025.
  - If your program/consortium currently pays for an Ellii organization plan or individual teacher subscriptions, [please contact the DL Team](#) for more information about transitioning to the state-supported plan.
- ☐ Check the [MN ABE Connect newsletter](#) and [the DL Website](#) for updates this summer and throughout the year. You can also [sign up for email updates here](#).

## Which platform should I choose?



## How do I access these platforms? What training is required?



# How would I teach with this?



**MobyMax**



**Ellii**



**Online Distance Learning**



Yes! Very popular for beginning literacy and pre-HSE content.



Yes! Teachers can easily assign digital versions of lessons being taught in class.



**Printable Pages for In-Class Use**



Yes, a limited selection of activities are printable.



Yes, most activities are easy to download and print.



**Present Activities During Class**



Yes, a teacher can sign in as a student and present their screen.



Yes, teachers can present and annotate PDF files and facilitate interactive, digital activities.



**Learners Log In During Class or Lab**



Yes, learners can sign in to their accounts and practice during class or lab time.



Yes, learners can sign in to their accounts and practice during class or lab time.



Be careful NOT to double-count contact hours and distance learning proxy hours!

# Comparing the Learner Experience



Limited learner seats; seats can be re-assigned



Unlimited learner accounts for 2025-26 pilot



"Young student" picture sign-in option



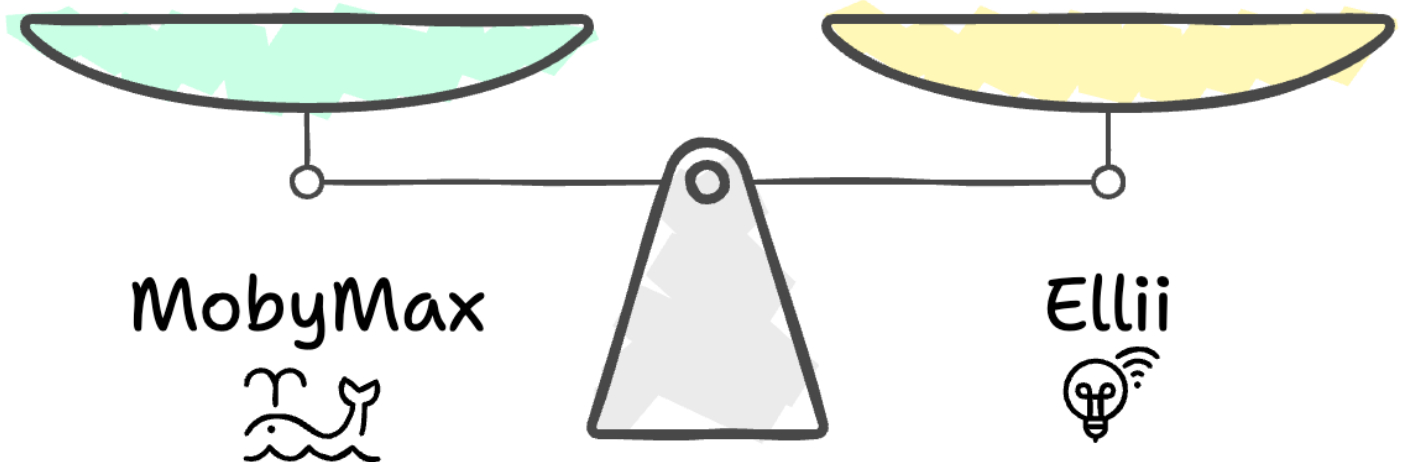
More support required for navigation



Browser-based; no mobile app



Browser-based; no mobile app



Please contact the Statewide Digital Learning Team with questions:

[support@mnabedistancelearning.zendesk.com](mailto:support@mnabedistancelearning.zendesk.com)

We are here to help!

